



# INSTALLATION MANUAL

## AS-4411 Arnott New Front Air Strut Cadillac/Chevrolet/GMC SUVs (GMT1xx)



**Engineered to Ride, Built to Last<sup>®</sup>**

# CONGRATULATIONS ON YOUR PURCHASE OF AN ARNOTT® SUSPENSION PRODUCT

WE AT ARNOTT LLC ARE PROUD TO OFFER A HIGH QUALITY PRODUCT WITH ALL THE TECHNICAL SUPPORT YOU NEED. THANK YOU FOR YOUR CONFIDENCE IN US AND OUR PRODUCT.

Proper installation is essential to experience and appreciate the benefits of this system. Please take a moment to review these installation instructions before you begin to install these components on your vehicle. The removal and installation of air suspension products should only be performed by a fully qualified and certified automotive professional.

It is equally important to be aware of all necessary safety measures while installing your new Air Suspension System. This includes proper lifting and immobilizing of the vehicle and isolation of any stored energy to prevent personal injury or property damage.

## GENERAL INFORMATION

Reading this manual signifies your agreement to the terms of the general release, waiver of liability, and hold harmless agreement, the full text of which is available at [www.arnottinc.com](http://www.arnottinc.com) and [www.arnotteurope.com](http://www.arnotteurope.com).



### WARNING:

The air suspension system is under pressure (up to 10 bar, or 150 lbf/in). Verify pressure has been relieved and disconnect power to the air suspension system prior to disassembly. Do not allow dirt or grease to enter the system. Always wear standard hand, ear, and eye protection when servicing the air suspension system.

- Not to be stored below 5°F (-15°C) and above 122°F (50°C).
- Avoid damage to air lines and cables.
- Removal and installation is only to be performed by fully qualified personnel.
- Use car manufacturer's diagnostic software.

### CAUTION:

Damage to the vehicle and air suspension system can be incurred if work is carried out in a manner other than specified in the instructions or in a different sequence.

To avoid the possibility of short circuits while working with electric components consult your owner's manual on how to disconnect your battery.

Consult your vehicle owner's manual, service manual, or car dealer for the correct jacking points on your vehicle and for additional care, safety and maintenance instructions. Under no circumstances should any work be completed underneath the vehicle if it is not adequately supported, as serious injuries and death can occur.

For vehicles with a "Closed Air Supply System," replacement of components requires proper adherence to procedures set forth within OE servicing literature. Failure to comply with the OE prescribed procedures can result in component damage and/or failure.

# AIR STRUT REMOVAL

1. Raise the vehicle.
2. Deflate and disable the air suspension system per manufacturer's instructions.
3. Remove the applicable front wheel. (Figure 1)



FIGURE 1

4. Move the plastic bracket from the top of the strut tower to gain access to the air line and top mount nuts.
5. Disconnect the air fitting from the strut. (Figures 2, 3)



FIGURE 2

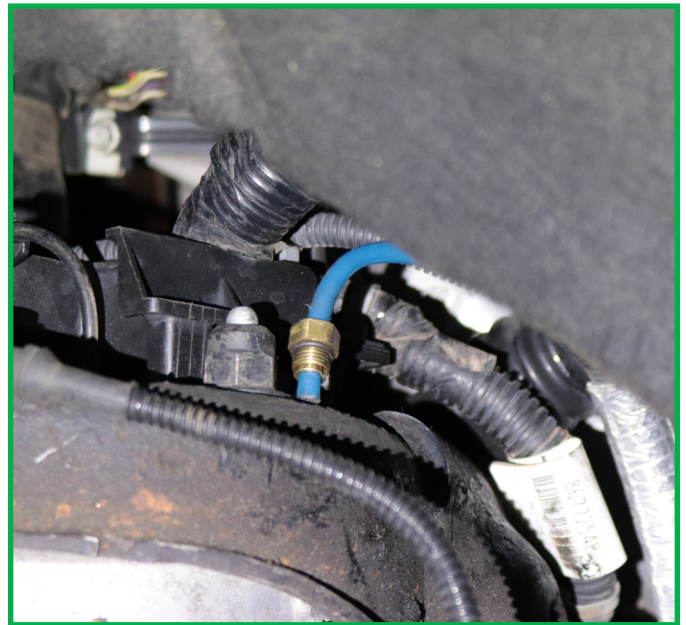


FIGURE 3

6. Disconnect the electrical connector from the strut. (Figure 4)



FIGURE 4

7. Remove the three top nuts from the strut. (Figures 5, 6)



FIGURE 5



FIGURE 6

8. Remove the two lower strut bolts. (Figure 7)



FIGURE 7

9. Disconnect the sway bar link at the lower control arm. (Figures 8, 9)



FIGURE 8



FIGURE 9

10. Remove the strut from the vehicle. (Figure 10)

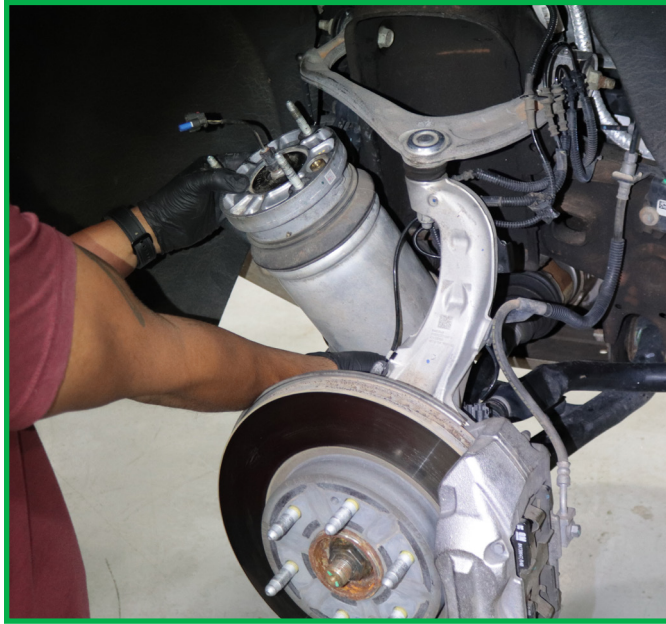


FIGURE 10

11. Removal complete.

## AIR STRUT INSTALLATION



**WARNING:**

Tighten all nuts and bolts to manufacturer's specifications during the installation process.

1. Remove the shipping plug from the air inlet on the new Arnott strut. Install the included air fitting. Tighten to approximately 2NM (18 IN-LBS). (Figures 11, 12)



FIGURE 11



FIGURE 12

2. Install the new Arnott strut into the vehicle. (Figure 13)



FIGURE 13

3. Install the three included top nuts. (Figure 14)



FIGURE 14

4. Connect the strut's electrical connector. (Figure 15)



FIGURE 15

5. Insert the air line into the new air fitting. (Figures 16, 17)



FIGURE 16

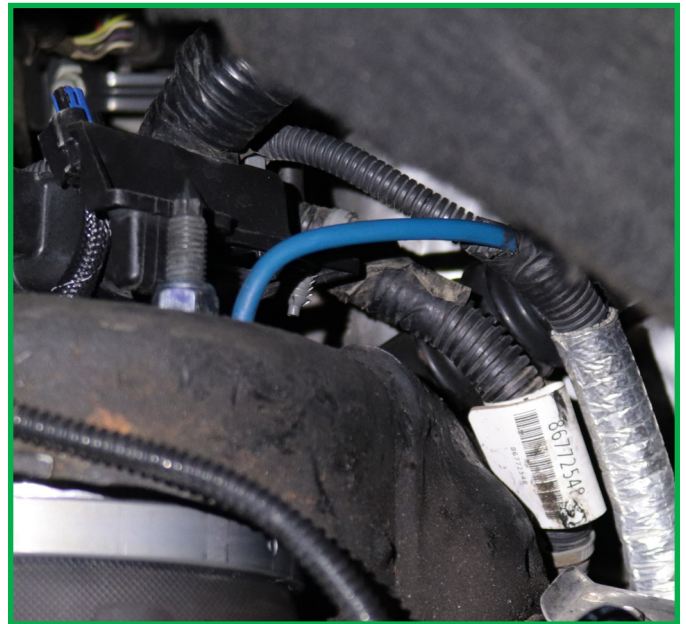


FIGURE 17



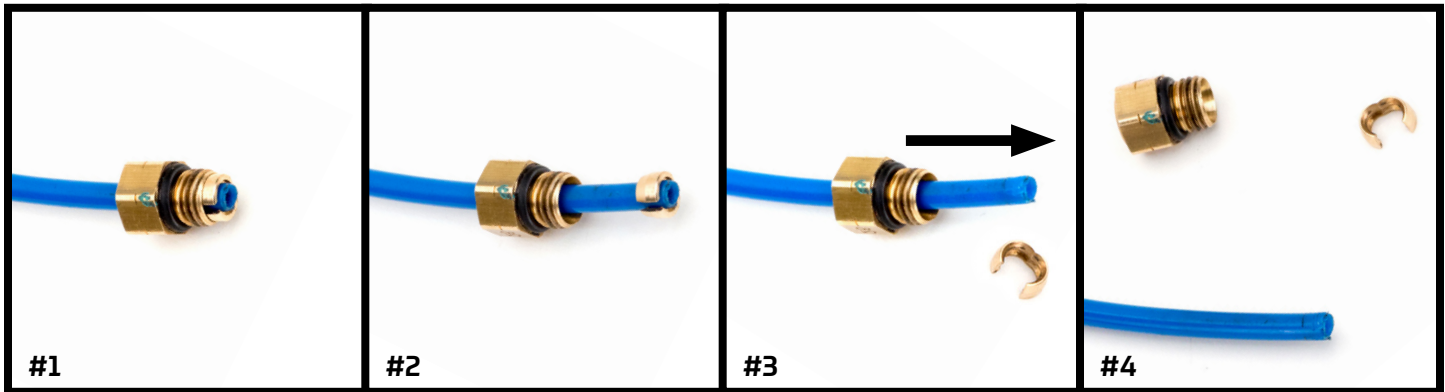
## REMOVAL



Prior to inserting the existing air line into the new air strut you will need to remove the old original equipment air line fitting and discard.

### NOTE:

Scratches and/or deep cuts in the air line can result in possible leaks. Inspect the air line before insertion. Air line needs to be replaced if damaged.



#1

OE AIR LINE FITTING

#2

SLIDE THE THREADED PORTION UP THE LINE AND SPREAD THE COLLET OPEN TO REMOVE

#3

SLIDE THE AIR FITTING OFF OF THE AIR LINE

#4

DISCARD OE AIR LINE FITTING

### 6. Install the included lower strut bolts and nuts. (Figures 18, 19)

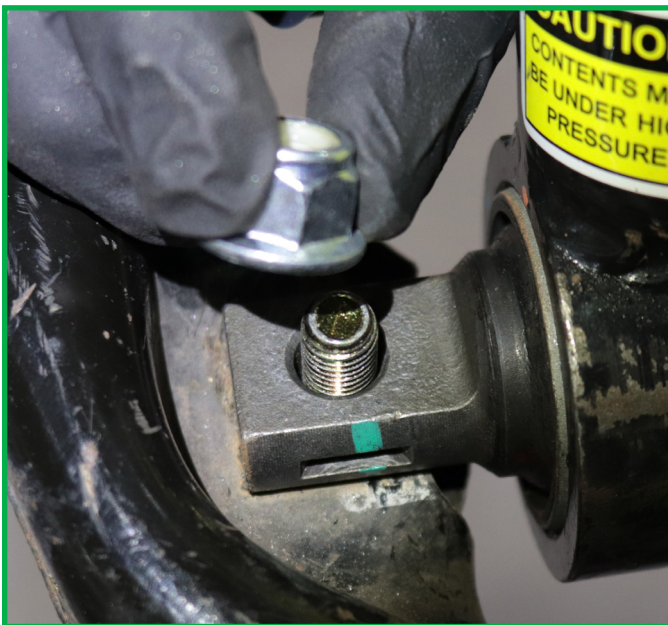


FIGURE 18

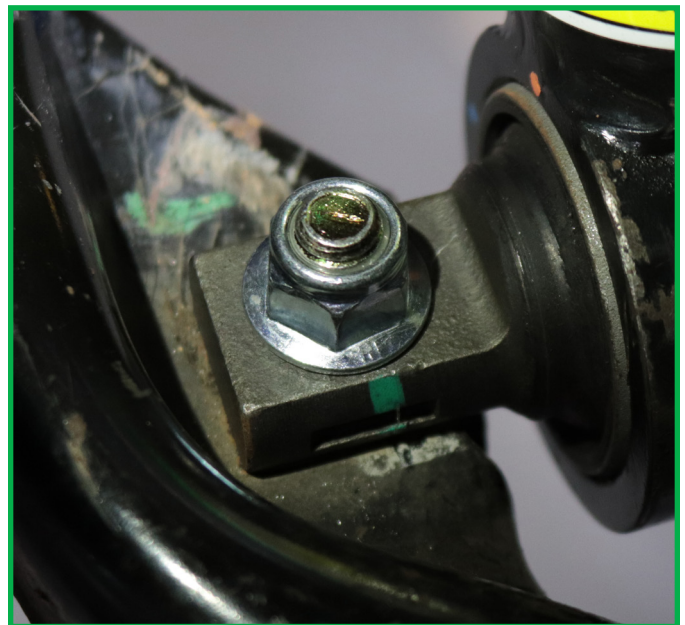


FIGURE 19

7. Reconnect the sway bar link at the lower control arm. (Figure 20)



FIGURE 20

8. Tighten all hardware to manufacturer's specifications.
9. Reinstall the wheel.
10. Inflate the air suspension system per manufacturer's instructions.
11. Installation complete.

# Arnott™

## Suspension Products

### Arnott US Business Office:

[www.arnottinc.com](http://www.arnottinc.com)

100 Sea Ray Drive  
Merritt Island, FL 32953

**Call:** 800. 251. 8993

321. 868. 3016

**Fax:** 321. 868. 3703

**Email:** [techassistance@arnottinc.com](mailto:techassistance@arnottinc.com)

### Arnott Europe Business Office:

[www.arnotteurope.com](http://www.arnotteurope.com)

Docterskampstraat 1E/1F, 3  
5222 AM 's-Hertogenbosch (NL)

**NL Phone:** +31 73 7850 580

**DE Phone:** +31 85 2087 438

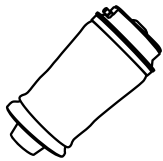
**UK Phone:** +44 203 3186 124

**BE Phone:** +32 258 846 90

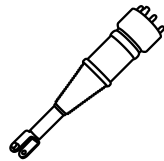
**ES Phone:** +34 91 901 10 56

**FR Phone:** +32 78 48 46 93

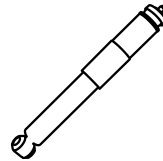
**Email:** [info@arnotteurope.com](mailto:info@arnotteurope.com)



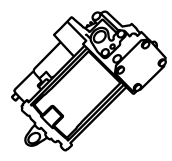
Air Springs



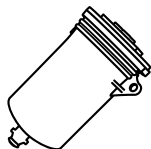
Struts



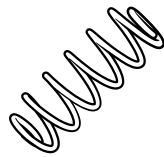
Shocks



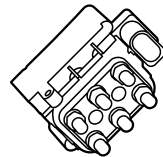
Compressors



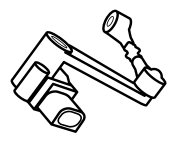
Dryers



Coil Spring  
Conversion Kits



Valve Blocks



Ride Height  
Sensors